

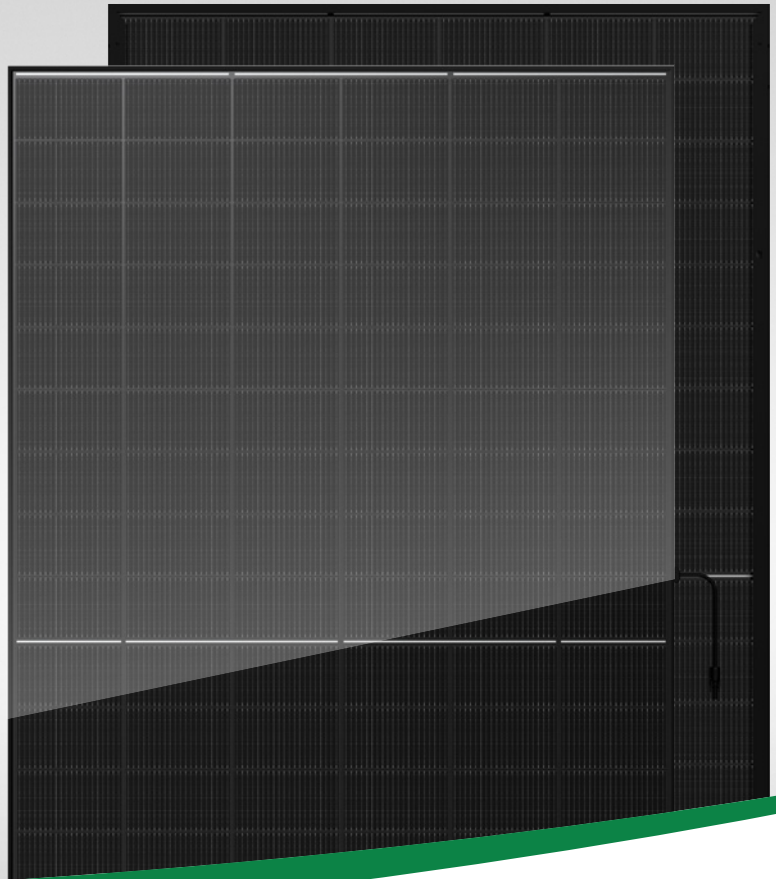
BiMAX 6R

500~515W

210x182mm 18BB 108Cells All Black
Double Glass Bifacial HJT
Mono Half Cell PV Module Series

HJT

23.17%
Max. Module Efficiency



Sunpal Linear Warranty



SMBB HJT
Half Cut Cell



Excellent Low-light
Performance



100% Inspection
Guarantee Reliability



Anti PID

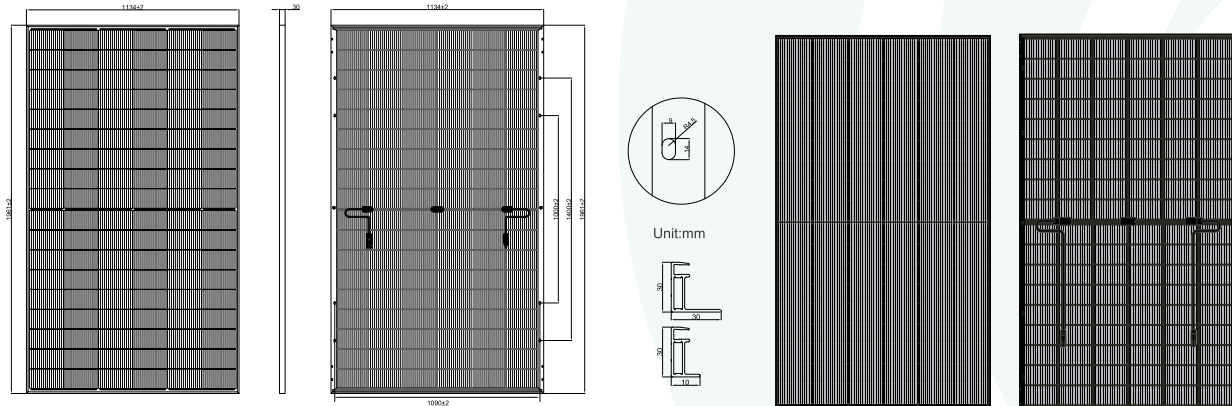


5400Pa
Strengthened
Mechanical Load



Advanced Bifacial
Efficiency

BiMAX 6R 500~515W



All Dimensions in mm
The above drawing is a graphical representation of the product,

Electrical Characteristics(STC/BSTC)

Module Type	SP500M-54H		SP505M-54H		SP510M-54H		SP515M-54H	
	STC	BSTC	STC	BSTC	STC	BSTC	STC	BSTC
Test Conditions								
Maximum Power- Pmax(W)	500	560	505	565	510	570	515	575
Open Circuit Voltage - Voc(V)	41.67	41.67	41.82	41.82	41.97	41.97	42.12	42.12
Short- Circuit Current - Isc(A)	15.42	17.19	15.47	17.25	15.52	17.30	15.57	17.36
Voltage at Pmax - Vmp(V)	34.36	34.36	34.49	34.49	34.61	34.61	34.74	34.74
Current at Pmax - Imp(A)	14.56	16.30	14.65	16.39	14.74	16.47	14.83	16.56
Module Efficiency -nm(%)	22.50	/	22.72	/	22.95	/	23.17	/
Power Tolerance(W)	(0,+4.99W)							
Maximum System Voltage(V)	1500Vdc (IEC/UL61730)							
Maximum Series Fuse Rating (A)	30A							

*STC :Irradiance 1000W/m²,Cell Temperature 25°C, Air Mass 1.5

*BSTC : Front side irradiation 1000W/m², back side reflection irradiation 135W/m², AM=1.5, Ambient Temperature 25°C.

*Measurement tolerance: ±3% *Power binning up to: +3%

Mechanical Specifications

External Dimensions	1960x1134x30mm
Weight	23.9kg
Solar Cells	HJT 182x105mm(2x54pcs)
Front Glass	AR Coated 1.6+1.6mm tempered glass
Frame	Anodized aluminum alloy
Junction Box	IP68
Output Cables	4.0mm ² ,300mm(+),300mm(-), length can be customized
Connector	MC4 Compatible
Mechanical Load	Front Side Max. 5400Pa, Rear Side Max.2400Pa

Packing configuration

Pallet Dimensions	1980x1140x1275mm		
Ways of Transport	40'HQ	13m Flatbed Truck	17.5m Flatbed Truck
Pieces per Pallet	37 Pcs	37 Pcs	37 Pcs
Pallets per Container	24 Pallets	24Pallets	28 Pallets
Pieces per Container	888 Pcs	888 Pcs	1036 Pcs

Temperature characteristics

Pmax Temperature Coefficient	-0.260%/°C
Voc Temperature Coefficient	-0.240%/°C
Isc Temperature Coefficient	+0.040%/°C
Operating Temperature Range	-40~+85°C
Nominal Operating Cell Temperature(NOCT)	44±2°C

Current-Voltage & Power-Voltage Curves(SP515M-54H)

