

SRNE Solar Co., Ltd

TEST REPORT

SCOPE OF WORK:

FCC Part 15 subpart B – EMC report

Model:

HESP followed by 4880, 48100 or 48120; followed by U200-H.

SEI- followed by 8K, 10K or 12K; followed by -UP.

HEBP followed by 4880, 48100,48114 or 48120; followed by U240-Pro.

SEI- followed by 8K, 10K,11.4k or 12K; followed by -UPRO.

REPORT NUMBER

2309A1339SHA-001+ Amendment 1

ISSUE DATE

2025-04-07

DOCUMENT CONTROL NUMBER

TTRFFCCPART15b_V1

© 2018 Intertek



Report no. 2309A1339SHA-001+
Amendment 1

Applicant : SRNE Solar Co., Ltd
4-5F,13A Wutong Island, Neihuan Rd,
Xixiang, Bao`an, SHENZHEN Guangdong 518100, China

Manufacturer : SRNE Solar Co., Ltd
Room 301, Building 5, Fuxing Road, No. 36, Chang'an Town,
Dongguan City, Guangdong, China

Manufacturing site : SRNE Solar Co., Ltd
Room 301, Building 5, Fuxing Road, No. 36, Chang'an Town,
Dongguan City, Guangdong, China

Summary

The equipment complies with the requirements according to the following standard(s) or Specification:

47CFR Part 15 (2023): Radio Frequency Devices (Subpart B)

ANSI C63.4 (2014) +A1 (2017): American National Standard for Methods of Measurement of Radio-Noise Emissions from Low-Voltage Electrical and Electronic Equipment in the Range of 9 kHz to 40 GHz

PREPARED BY:

REVIEWED BY:



Perry Li
Project Engineer

John Jiang
Reviewer

This report is for the exclusive use of Intertek's Client and is provided pursuant to the agreement between Intertek and its Client. Intertek's responsibility and liability are limited to the terms and conditions of the agreement. Intertek assumes no liability to any party, other than to the Client in accordance with the agreement, for any loss, expense or damage occasioned by the use of this report. Only the Client is authorized to permit copying or distribution of this report and then only in its entirety. Any use of the Intertek name or one of its marks for the sale or advertisement of the tested material, product or service must first be approved in writing by Intertek. The observations and test results in this report are relevant only to the sample tested. This report by itself does not imply that the material, product, or service is or has ever been under an Intertek certification program.

Contents

REVISION HISTORY	4
MEASUREMENT RESULT SUMMARY	5
1 GENERAL INFORMATION	6
1.1 DESCRIPTION OF EQUIPMENT UNDER TEST (EUT)	6
1.2 DESCRIPTION OF TEST FACILITY	11
2 TEST SPECIFICATIONS	12
2.1 STANDARDS OR SPECIFICATION	12
2.2 MODE OF OPERATION DURING THE TEST	12
2.3 TEST SOFTWARE LIST	12
2.4 TEST PERIPHERALS LIST.....	12
2.5 RECORD OF CLIMATIC CONDITIONS	12
2.6 INSTRUMENT LIST	13
2.7 MEASUREMENT UNCERTAINTY	14
3 CONDUCTED EMISSION	15
3.1 LIMITS.....	15
3.1.1 <i>Limits for conducted emission of class A device</i>	15
3.1.2 <i>Limits for conducted emission of class B device</i>	15
3.2 TEST SETUP	16
3.3 TEST SETUP AND TEST PROCEDURE	17
3.4 TEST PROTOCOL	18
4 RADIATED EMISSION	21
4.1 RADIATED EMISSION LIMITS	21
4.1.1 <i>Limits for radiated emission of class A device</i>	21
4.1.2 <i>Limits for radiated emission of class B device</i>	21
4.2 BLOCK DIAGRAM AND TEST SET UP	22
4.3 TEST SETUP AND TEST PROCEDURE	23
4.4 TEST PROTOCOL	24
APPENDIX I: PHOTOGRAPH OF TEST SETUP	30
APPENDIX II: PHOTOGRAPH OF EQUIPMENT UNDER TEST	31

Revision History

Report No.	Version	Description	Issued Date
2309A1339SHA-001	Rev. 01	Job number: 2309A1339SHA	2024-06-05
2309A1339SHA-001+ Amendment 1	Rev. 01	Job number: 2501B1837SHA	2025-04-07

Measurement result summary

TEST ITEM	FCC REFERANCE	TEST RESULT	NOTE
Conducted emission	15.107	Pass	
Radiation emission	15.109	Pass	

Notes: 1: NA =Not Applicable

2: Determination of the test conclusion is based on IEC Guide 115 in consideration of measurement uncertainty.

3: Additions, Deviations and Exclusions from Standards: None.

1 GENERAL INFORMATION

1.1 Description of Equipment Under Test (EUT)

Product Name	: Solar Hybrid Inverter HESP followed by 4880, 48100 or 48120; followed by U200-H.
Type/Model	: SEI- followed by 8K, 10K or 12K; followed by -UP. HEBP followed by 4880, 48100,48114 or 48120; followed by U240-Pro. SEI- followed by 8K, 10K,11.4k or 12K; followed by -UPRO.
Description of EUT	: The products covered by this report are outdoors, split-phase or three-phase, Non-isolated, Hybrid inverter with Grid Support Utility Interactive Inverter. SEI-8K-UP is same with HESP 4880U200-H except model name. SEI-10K-UP is same with HESP 48100U200-H except model name. SEI-12K-UP is same with HESP 48120U200-H except model name. All models have same hardware and software except for the different power controlled by software and inverter inductor. 48 stands for 48V battery voltage. 80 or 8K stands for output power 8.8kW, 100 or 10K stands for output power 10kW, 120 or 12K stands for output power 12kW. 200 stands for charging current 200A. H stand for PV voltage 550V. P stands for Parallel communication board. After technical evaluation, we selected its typical model to test and listed its worst test data as representative in report.
Rating	: See next page for details
Brand name	: SRNE
Mains lead	: (un)shielded, (non)detachable
Data cable	: None
I/O Port	: None
Category of EUT	: Class B
EUT type	: <input type="checkbox"/> Table top <input checked="" type="checkbox"/> Floor standing
Highest operating frequency	: Less than 1.705MHz

Sample received date : 2024-04-29

Sample identification No. : -

Date of test : 2024-04-30 to 2024-05-23, 2025-03-14 to 2025-03-15

Amendment 1 : Add new model HEBP followed by 4880, 48100,48114 or 48120; followed by U240-Pro.
SEI- followed by 8K, 10K,11.4k or 12K; followed by -UPRO.
SEI-8K-UPRO is same with HEBP 4880U240-Pro except model name.
SEI-10K-UPRO is same with HEBP 48100U240-Pro except model name.
SEI-11.4K-UPRO is same with HEBP 48114U240-Pro except model name.
SEI-12K-UPRO is same with HEBP 48120U240-Pro except model name.
HEBP48100U240-Pro is the same as the original certified model HESP48100U200-H except for the model number, the size of enclosure, the position of the terminal, and the power. The product principle, internal structure, internal topology, and PCB used are the same as the original certified model HESP48100U200-H.

After technical evaluation, we selected its typical model HEBP48120U240-Pro to test and listed its worst test data as representative in report.

Rating list :

Specifications table			
Model	HESP4880U200-H SEI-8K-UP	HESP48100U200-H SEI-10K-UP	HESP48120U200-H SEI-12K-UP
PV input			
Vmax PV (Vdc) (absolute Max.)	550Vdc	550Vdc	550Vdc
Isc PV (absolute Max.) (A)	37*2	37*2	37*2
Max. PV input current / strings (A)	25A *2	25A *2	25A *2
Number MPP trackers	2	2	2
Number input strings	1+1	1+1	1+1
MPPT voltage range (Vdc)	125~ 450Vdc	125~ 450Vdc	125~ 450Vdc
Vdc range @ full power (Vdc)	275-450 Vdc	275-450 Vdc	275-450 Vdc
P pv Max(kW)	5500W/5500W	5500W/5500W	6600W/6600W
Battery (charge/discharge)			
Battery type	Li-ion/Lead-acid		
Battery Norma Voltage (Range) (Vdc)	48V (40-60V)		
Max discharge Current(A)	230	230	270
Max charge Current(A)	200	200	200
Max charge/discharge Power(kW)	11/10.5	11/12	11/14
AC Grid (input and output)			
Normal AC Voltage (VAC)	120/240 Vac (Split Phase) 120/208Vac(Three phase)		
Frequency (Hz)	60Hz		
Max. cont. input/output current (Aac)	@240V 36.6 @208V 42.3	@240V 41.7 @208V 48.1	50
Max. cont. input/output Power (kW)	8.8	10	@240V 12 @208V 10.4
Max. cont. Apparent Power (kVA)	8.8	10	@240V 12 @208V 10.4
Power factor(adjustable)	1.0(-0.8~ +0.8)		
AC Load output (stand alone)			
Normal Voltage (L-L) (VAC)	240/208 Vac	240/208 Vac	240/208 Vac
Normal Voltage (L-O) (VAC)	120 Vac	120Vac	120Vac
Frequency (Hz)	60	60	60

Specifications table				
Model	HEBP4880U240-Pro SEI-8K-UPRO	HEBP48100U240-Pro SEI-10K-UPRO	HEBP48114U240-Pro SEI-11.4K-UPRO	HEBP48120U240-Pro SEI-12K-UPRO
PV input				
Vmax PV (Vdc) (absolute Max.)	550Vdc	550Vdc	550Vdc	550Vdc
Isc PV (absolute Max.) (A)	40*2	40*2	40*2	40*2
Max. PV input current / strings (A)	32A *2	32A *2	32A *2	32A *2
Number MPP trackers	2	2	2	2
Number input strings	1+1	1+1	1+1	1+1
MPPT voltage range (Vdc)	125~450Vdc	125~450Vdc	125~450Vdc	125~450Vdc
Vdc range @ full power (Vdc)	275-450 Vdc	275-450 Vdc	275-450 Vdc	275-450 Vdc
P pv Max(kW)	6.6KW/6.6KW	7.5KW/7.5KW	8.55KW/8.55KW	9KW/9KW
Battery (charge/discharge)				
Battery type	Li-ion/Lead-acid			
Battery Norma Voltage (Range) (Vdc)	48V (40-60V)			
Max discharge Current(A)	230	230	250	270
Max charge Current(A)	240	240	240	240
Max charge/discharge Power(kW)	13/10.5	13/12	13/12	13/14
AC Grid (input and output)				
Normal AC Voltage (VAC)	120/240 Vac (Split Phase) 120/208Vac(Three phase)			
Frequency (Hz)	60Hz			
Max. cont. input/output current (Aac)	@240V 36.6	@240V 41.7	@240V 47.5A	50
	@208V 42.3	@208V 48.1	@208V 50A	
Max. cont. input/output Power (kW)	8.8	10	@240V 11.4	@240V 12
			@208V 10.4	@208V 10.4
Max. cont. Apparent Power (kVA)	8.8	10	@240V 11.4	@240V 12
			@208V 10.4	@208V 10.4

Power factor(adjustable)	1.0(-0.8~ +0.8)			
AC Load output (stand alone)				
Normal Voltage (L-L) (VAC)	240/208 Vac	240/208 Vac	240/208 Vac	240/208 Vac
Normal Voltage (L-N) (VAC)	120 Vac	120Vac	120Vac	120Vac
Frequency (Hz)	60	60	60	60
Nominal Current(A)	@240V 36.6	@240V 41.7	@240V 47.5A	50
	@208V 42.3	@208V 48.1	@208V 50A	
Max. cont. Power (kW)	8.8	10	@240V 11.4	@240V 12
			@208V 10.4	@208V 10.4
Max. cont. Apparent Power (kVA)	8.8	10	@240V 11.4	@240V 12
			@208V 10.4	@208V 10.4
Power factor(adjustable)	1			
Others				
Ingress protection (IP)	NEMA 4X IP65			
Protective class	Class I			
Temperature (°C)	-25°C to +60°C (Derating 45°C)			
Inverter Isolation	Non-isolated PV- battery- AC High frequency isolated			
Overvoltage category	OVC III (AC Main), OVC II (PV)			

1.2 Description of Test Facility

Name : Intertek Testing Services Shanghai

Address : Building 86, No. 1198 Qinzhou Road(North), Shanghai 200233, P.R. China

Telephone : 86 21 61278200

Telefax : 86 21 54262353

The test facility is recognized, certified, or accredited by these organizations :

- CNAS Accreditation Lab
Registration No. CNAS L0139
- FCC Accredited Lab
Designation Number: CN0175
- IC Registration Lab
CAB identifier.: CN0051
- VCCI Registration Lab
Registration No.: R-14243, G-10845, C-14723, T-12252
- A2LA Accreditation Lab
Certificate Number: 3309.02

2 TEST SPECIFICATIONS

2.1 Standards or specification

47CFR Part 15 (2023): Radio Frequency Device: Subpart A

ANSI C63.4 (2014)+A1 (2017): Interim Standard for Methods of Measurement of Radio-Noise Emissions from Low-Voltage Electrical and Electronic Equipment in the Range of 9 kHz to 40GHz.

2.2 Mode of operation during the test

Within this test report, EUT was tested under all available operation modes and tested under its rating voltage and frequency. Other voltage and frequency is specified if used.

2.3 Test software list

Test Items	Software	Manufacturer	Version
Conducted emission	ESxS-K1	R&S	V2.1.0
Radiated emission	ES-K1	R&S	V1.71

2.4 Test peripherals list

Item No.	Name	Band and Model	Description
-	-	-	-

2.5 Record of climatic conditions

Test Item	Temperature (°C)	Relative Humidity (%)	Pressure (Kpa)
Conducted emission	34	45	101
Radiated Emission	34	45	101

Notes: NA =Not Applicable

2.6 Instrument list

Conducted Emission / Disturbance Power / Tri-loop Test / CDN method					
Used	Equipment	Manufacturer	Type	Internal no.	Due date
■	Test Receiver	R&S	ESCI	101045	2025-05-10
■	A.M.N.	R&S	ESH3-Z5	100191	2025-05-10
■	A.M.N.	Schwarzbeck	NNLK 8129	8129203	2025-05-11
■	PULSE LIMITER	R&S	ESH3-Z2	100107	2025-05-10
Radiated Emission					
Used	Equipment	Manufacturer	Type	Internal no.	Due date
■	Test Receiver	R&S	ESU 26	100154	2025-05-10
■	Bilog Antenna	Schwarzbeck	VULB9163	661	2025-06-02
■	Per-Amplifie	Lunar EM	LNA30M3G-25	J10100000070	2025-05-10

2.7 Measurement Uncertainty

Measurement	Frequency	Expanded Uncertainty (k=2) (±)
Conducted emission at mains ports	9kHz ~ 150kHz	3.16 dB
	150kHz ~ 30MHz	2.90 dB
Radiated Emissions up to 1 GHz	30MHz ~ 1GHz	H: 3.78 dB
		V: 4.42 dB

3 Conducted emission

Test result: **PASS**

3.1 Limits

3.1.1 Limits for conducted emission of class A device

Frequency range (MHz)	Limits dB(μV)	
	Quasi-peak	Average
0.15 ~ 0.5	79	66
0.5 ~ 30	73	60

Note: If the limit for the measurement with the average detector is met when using a receiver with a quasi-peak detector, the equipment under test shall be deemed to meet both limits and the measurement using the receiver with an average detector need not be carried out.

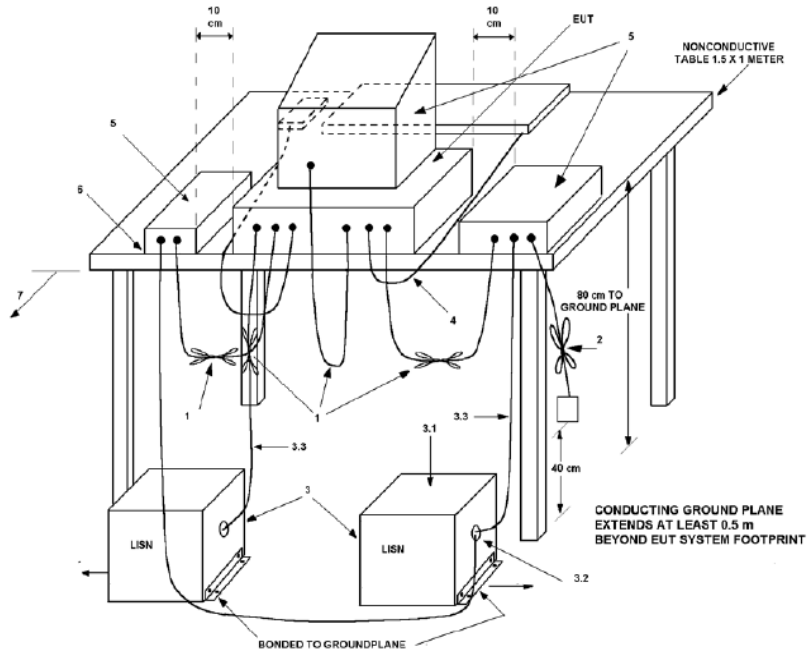
3.1.2 Limits for conducted emission of class B device

Frequency range (MHz)	Limits dB(μV)	
	Quasi-peak	Average
0.15 ~ 0.5	66 ~ 56 *	56 ~ 46 *
0.5 ~ 5	56	46
5 ~ 30	60	50

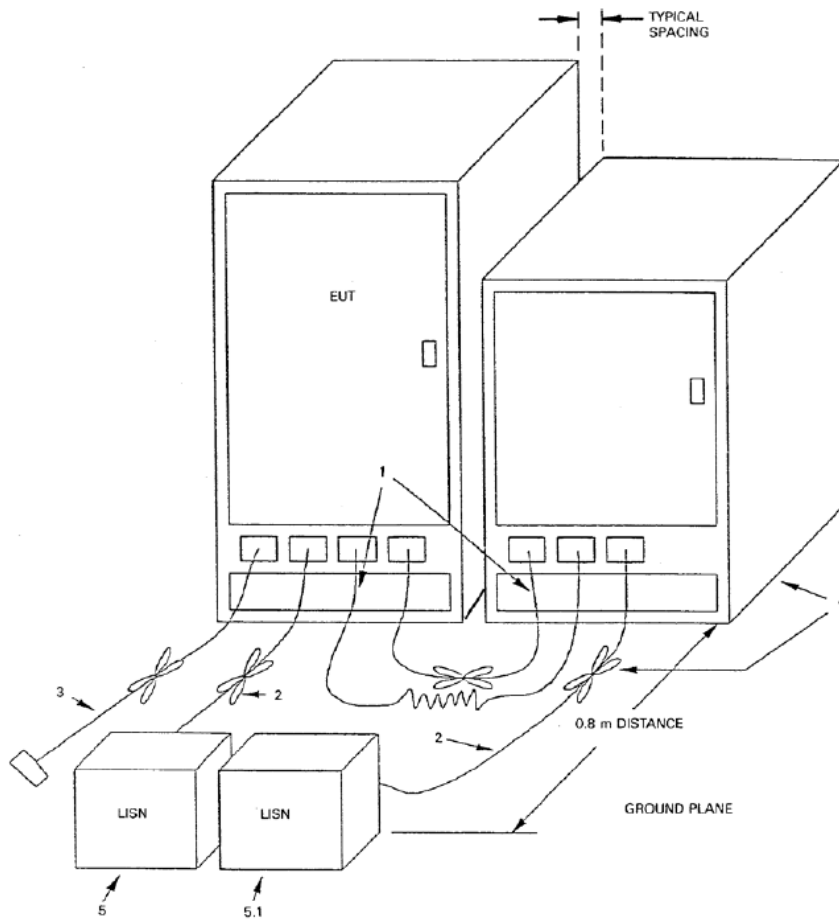
Note: 1. * Means the limit decreasing linearly with the logarithm of the frequency in the range 0.15MHz to 0.5MHz
2. If the limit for the measurement with the average detector is met when using a receiver with a quasi-peak detector, the equipment under test shall be deemed to meet both limits and the measurement using the receiver with an average detector need not be carried out.

3.2 Test setup

For table top equipment



For floor standing equipment



3.3 Test Setup and Test Procedure

Measurement was performed in shielded room, and instruments used were following clause 4 and clause 5 of ANSI 63.4.

Detailed test procedure was following clause 7.3 of ANSI 63.4.

EUT arrangement and operation conditions were according to clause 6 and clause 7 of ANSI 63.4.

Frequency range 150kHz – 30MHz was checked and EMI receiver measurement bandwidth was set to 9 kHz.

3.4 Test Protocol

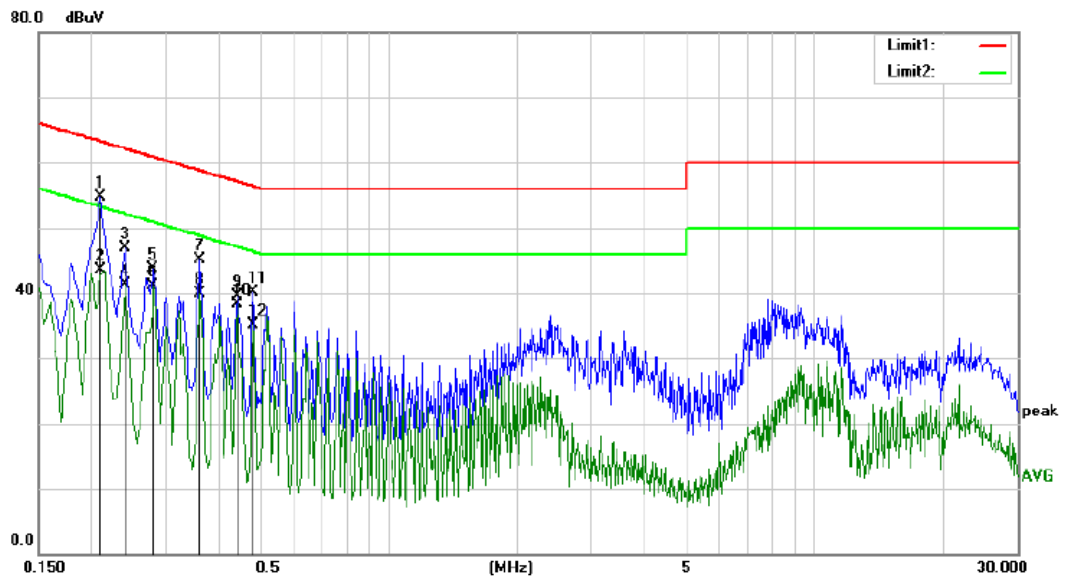
Charging mode

Model: HEBP48120U240-Pro

Test voltage for 240V/50Hz

L1 line:

Test Curve:

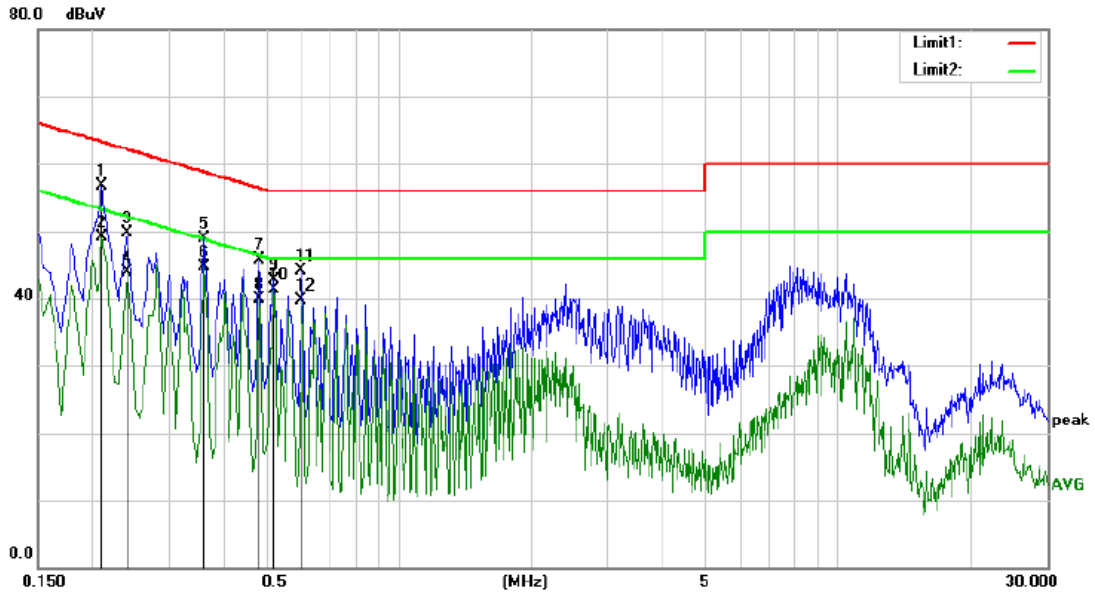


Test data:

No.	Mk.	Freq. MHz	Reading Level dBuV	Correct Factor dB	Measure- ment dBuV	Limit dBuV	Over dB	Detector	Comment
1	*	0.2100	44.19	10.50	54.69	63.21	-8.52	QP	
2		0.2100	32.93	10.50	43.43	53.21	-9.78	AVG	
3		0.2400	36.32	10.52	46.84	62.10	-15.26	QP	
4		0.2400	30.73	10.52	41.25	52.10	-10.85	AVG	
5		0.2800	33.11	10.54	43.65	60.82	-17.17	QP	
6		0.2800	30.61	10.54	41.15	50.82	-9.67	AVG	
7		0.3600	34.41	10.64	45.05	58.73	-13.68	QP	
8		0.3600	29.33	10.64	39.97	48.73	-8.76	AVG	
9		0.4400	28.95	10.63	39.58	57.06	-17.48	QP	
10		0.4400	27.67	10.63	38.30	47.06	-8.76	AVG	
11		0.4800	29.51	10.57	40.08	56.34	-16.26	QP	
12		0.4800	24.61	10.57	35.18	46.34	-11.16	AVG	

L2 line:

Test Curve:

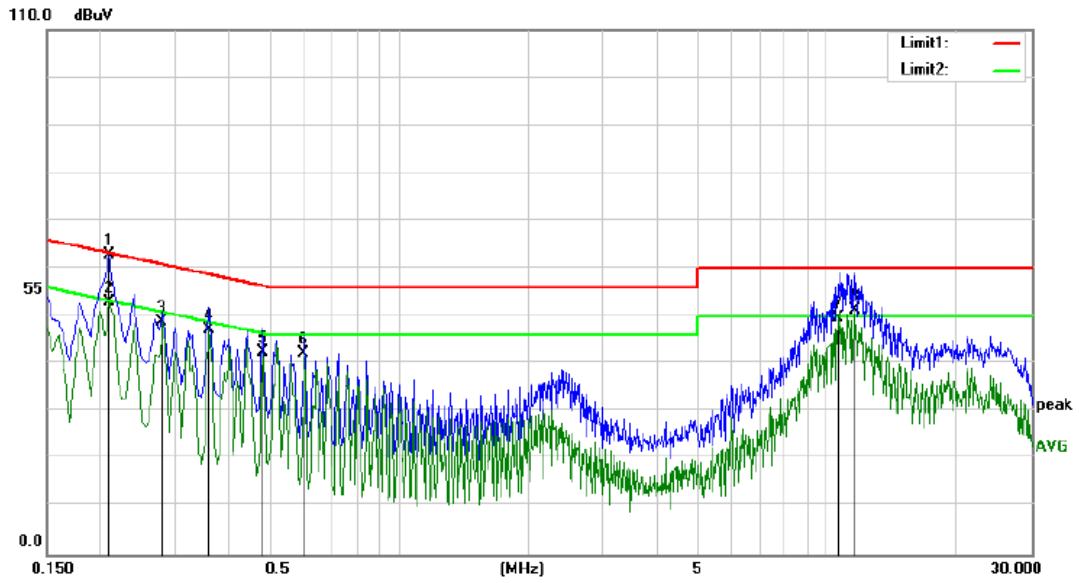


Test data:

No.	Mk.	Freq. MHz	Reading Level dBuV	Correct Factor dB	Measure- ment dBuV	Limit dBuV	Over dB	Detector	Comment
1		0.2100	46.26	10.50	56.76	63.21	-6.45	QP	
2		0.2100	38.55	10.50	49.05	53.21	-4.16	AVG	
3		0.2400	39.19	10.52	49.71	62.10	-12.39	QP	
4		0.2400	33.32	10.52	43.84	52.10	-8.26	AVG	
5		0.3600	38.30	10.64	48.94	58.73	-9.79	QP	
6	*	0.3600	34.10	10.64	44.74	48.73	-3.99	AVG	
7		0.4800	35.20	10.57	45.77	56.34	-10.57	QP	
8		0.4800	29.40	10.57	39.97	46.34	-6.37	AVG	
9		0.5200	32.11	10.53	42.64	56.00	-13.36	QP	
10		0.5200	30.77	10.53	41.30	46.00	-4.70	AVG	
11		0.6000	33.68	10.48	44.16	56.00	-11.84	QP	
12		0.6000	29.22	10.48	39.70	46.00	-6.30	AVG	

N line:

Test Curve:



Test data:

No.	Mk.	Freq. MHz	Reading Level dBuV	Correct Factor dB	Measure- ment dBuV	Limit dBuV	Over dB	Detector	Comment
1		0.2100	52.45	10.50	62.95	63.21	-0.26	peak	
2		0.2100	42.53	10.50	53.03	53.21	-0.18	AVG	
3		0.2800	38.24	10.54	48.78	50.82	-2.04	AVG	
4		0.3600	36.53	10.64	47.17	48.73	-1.56	AVG	
5		0.4800	31.93	10.57	42.50	46.34	-3.84	AVG	
6		0.6000	31.85	10.48	42.33	46.00	-3.67	AVG	
7		10.5800	39.06	10.55	49.61	50.00	-0.39	AVG	
8	*	11.5800	40.80	10.56	51.36	50.00	1.36	AVG	

4 Radiated emission

Test result: **PASS**

4.1 Radiated emission limits

4.1.1 Limits for radiated emission of class A device

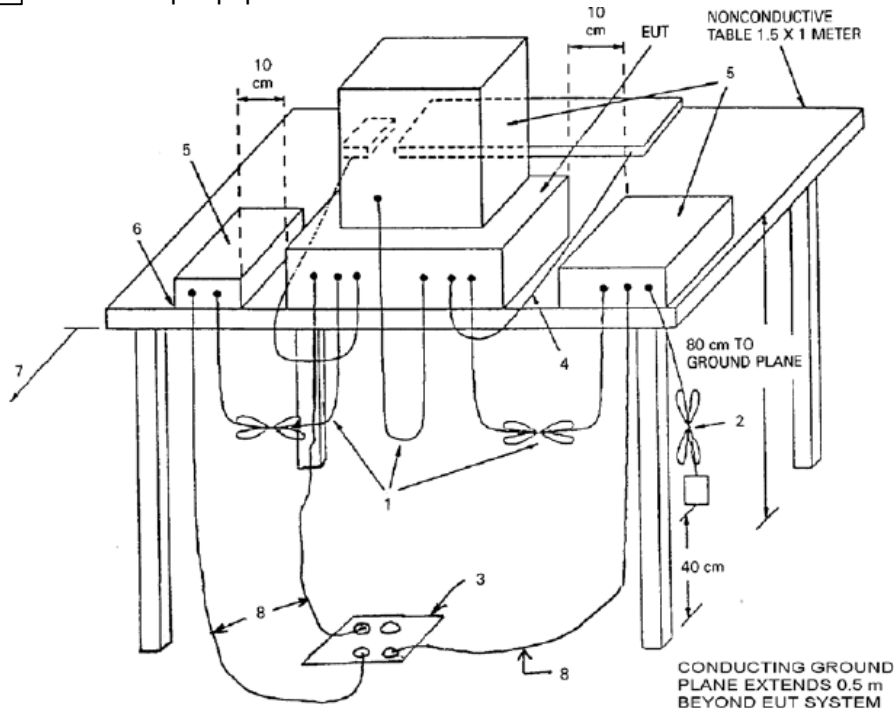
Frequency (MHz)	Permitted limit in dB μ V/m (Quasi-peak) of Measurement Distance 10m
30 ~ 88	39
88 ~ 216	43.5
216 ~ 960	46.4
Above 960	49.5
Note: for the measurement distance other than 3m and 10m, the limit is varied according to 20dB/10 decades.	

4.1.2 Limits for radiated emission of class B device

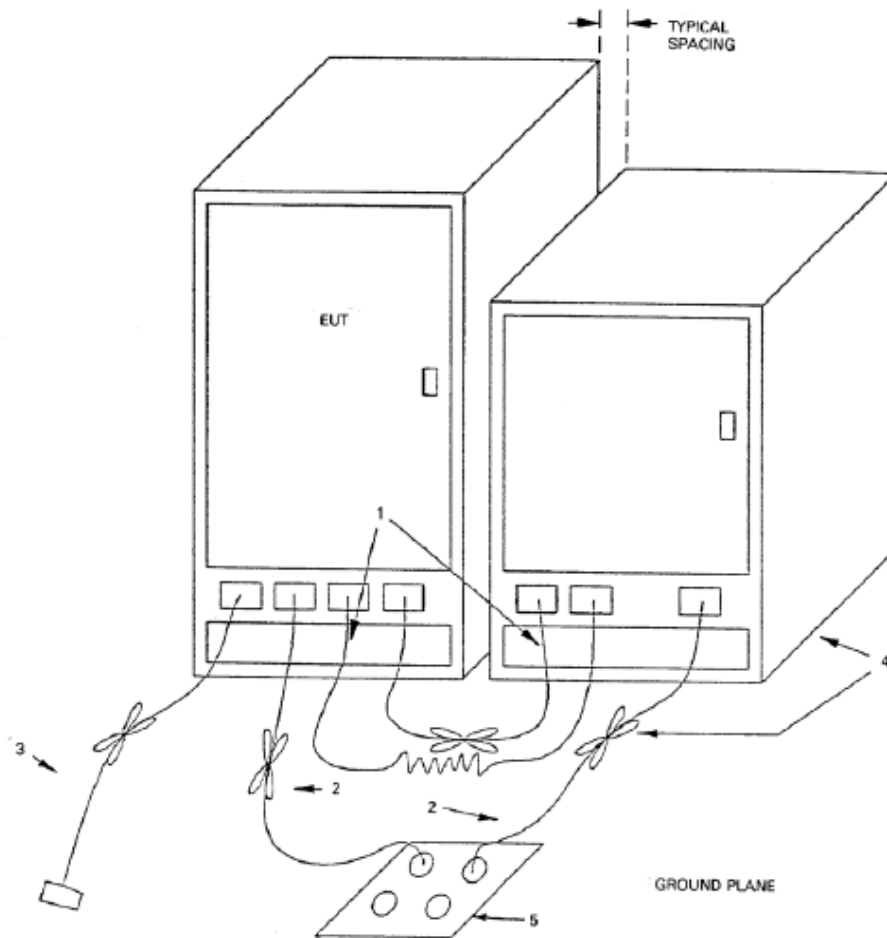
Frequency (MHz)	Permitted limit in dB μ V/m (Quasi-peak) of Measurement Distance 3m
30 ~ 88	40.0
88 ~ 216	43.5
216 ~ 960	46.0
Above 960	54.0
Note: for the measurement distance other than 3m and 10m, the limit is varied according to 20dB/10 decades.	

4.2 Block diagram and test set up

For table top equipment



For floor standing equipment



4.3 Test Setup and Test Procedure

The measurement was performed in a semi-anechoic chamber.

The distance from EUT to receiving antenna is 3 meter.

Measurement was performed according to clause 4 and clause 5 of ANSI 63.4.

Test procedure was according to clause 8.3 of ANSI 63.4.

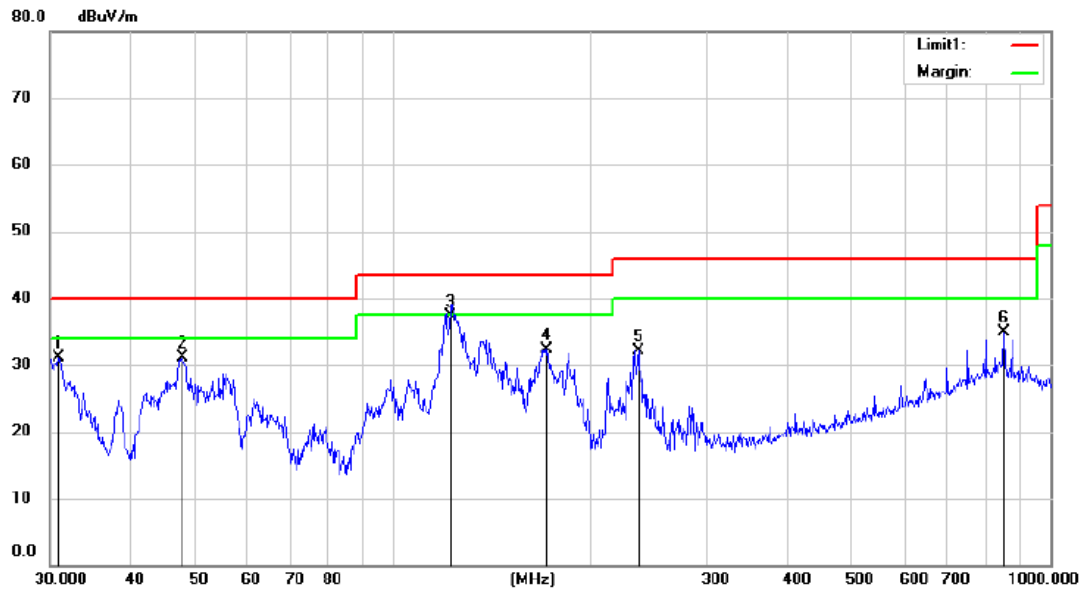
EUT arrangement and operate condition were according to clause 6 and clause 8 of ANSI 63.4.

The bandwidth setting on R&S Test Receiver was 120 kHz.

The required measurement frequency range was checked.

4.4 Test Protocol

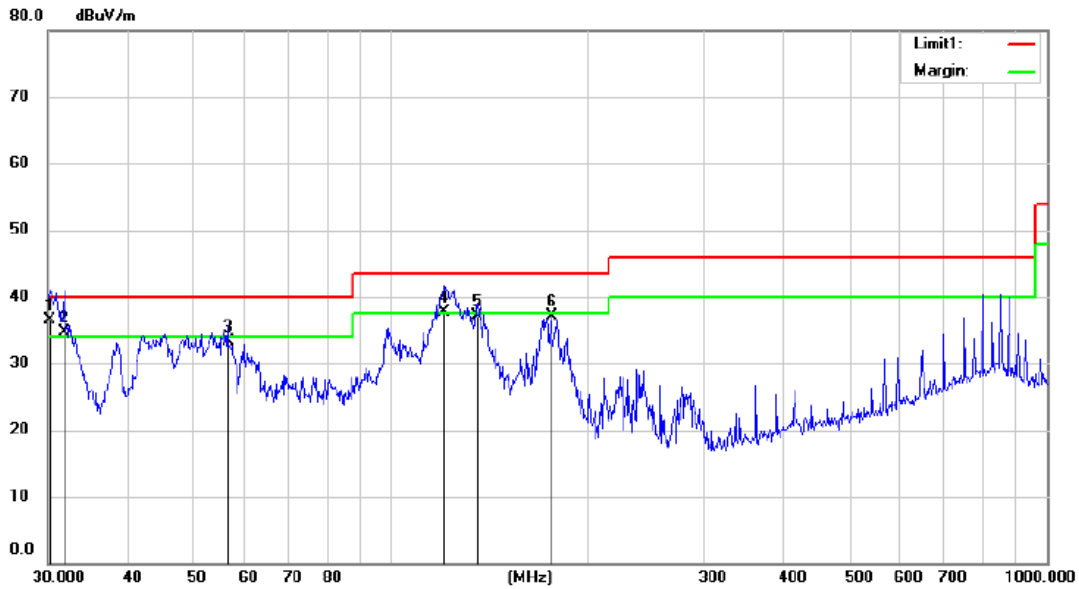
Test voltage for 240V/60Hz
 Model: HEBP48120U240-Pro
 Charging mode
 Test Curve:
 Horizontal:



Final Result

No.	Mk.	Freq.	Reading Level	Correct Factor	Measurement	Limit	Over	Antenna Height	Table Degree	
		MHz	dBuV	dB	dBuV/m	dBuV/m	dB	cm	degree	Comment
1		30.8941	47.63	-16.46	31.17	40.00	-8.83	QP		
2		47.7213	45.35	-14.26	31.09	40.00	-8.91	QP		
3	*	122.6726	54.41	-17.01	37.40	43.50	-6.10	QP		
4		171.5428	48.68	-16.41	32.27	43.50	-11.23	QP		
5		236.2302	46.58	-14.45	32.13	46.00	-13.87	QP		
6		851.7817	33.15	1.79	34.94	46.00	-11.06	QP		

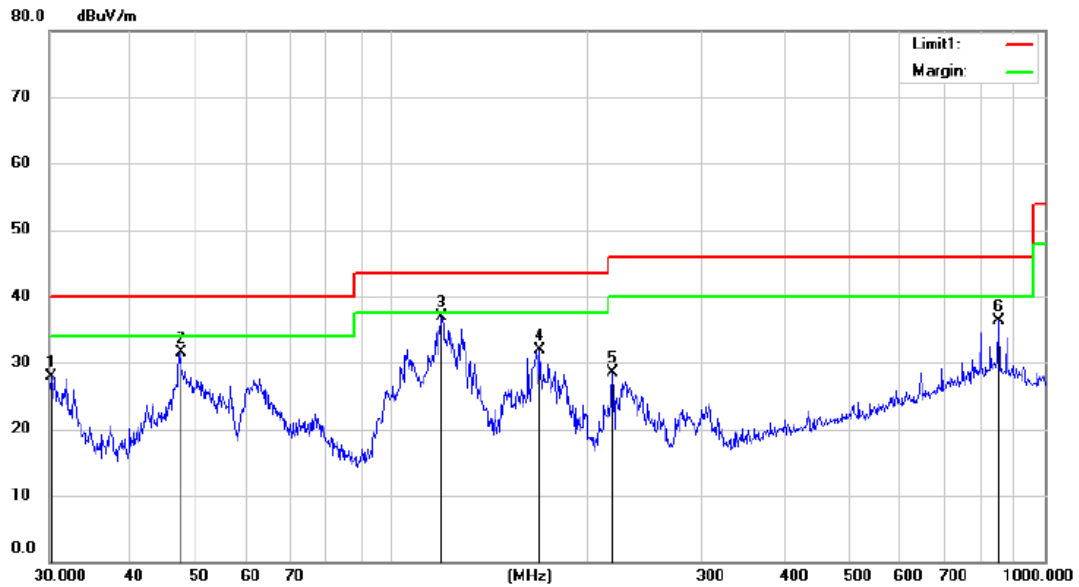
**Test Curve:
Vertical:**



Final Result

No.	Mk.	Freq. MHz	Reading Level dBuV	Correct Factor dB	Measure- ment dBuV/m	Limit dBuV/m	Over dB	Detector	Antenna Height cm	Table Degree	Comment
1	*	30.2111	53.03	-16.53	36.50	40.00	-3.50	QP			
2	!	31.7730	51.15	-16.45	34.70	40.00	-5.30	QP			
3		56.4442	47.74	-14.34	33.40	40.00	-6.60	QP			
4	!	120.8050	54.48	-16.68	37.80	43.50	-5.70	QP			
5		135.5654	54.36	-17.26	37.10	43.50	-6.40	QP			
6		175.7286	53.44	-16.40	37.04	43.50	-6.46	QP			

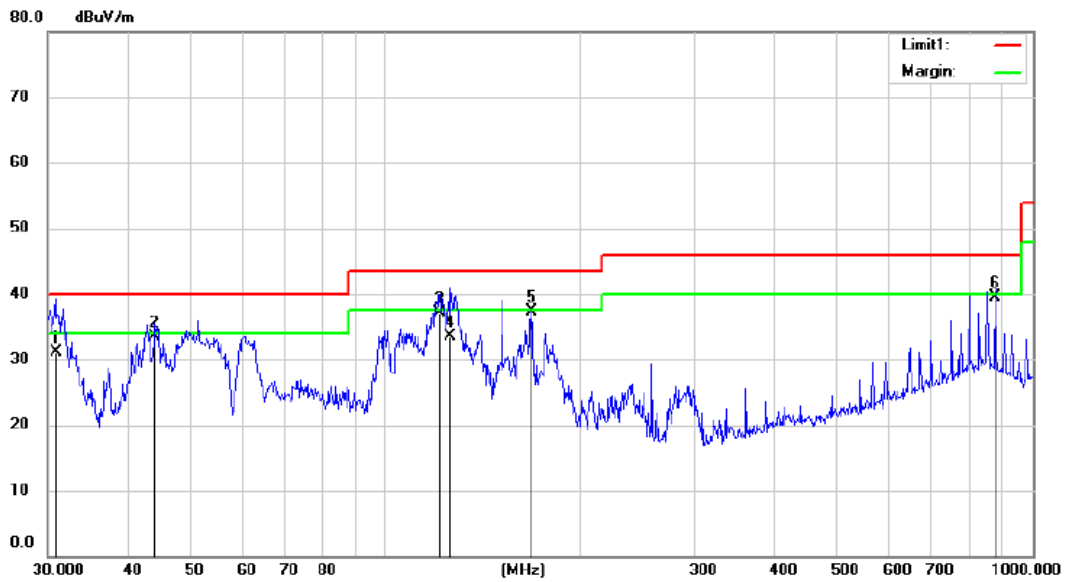
Discharging mode+ AC Out
Test Curve:
Horizontal:



Final Result

No. Mk.	Freq.	Reading Level	Correct Factor	Measurement	Limit	Over	Detector	Antenna Height	Table Degree	Comment
	MHz	dBuV	dB	dBuV/m	dBuV/m	dB		cm	degree	
1	30.2376	44.41	-16.53	27.88	40.00	-12.12	QP			
2	47.8050	45.69	-14.25	31.44	40.00	-8.56	QP			
3 *	119.6981	53.35	-16.52	36.83	43.50	-6.67	QP			
4	169.2277	48.42	-16.51	31.91	43.50	-11.59	QP			
5	218.7874	43.78	-15.26	28.52	46.00	-17.48	QP			
6	851.7816	34.47	1.79	36.26	46.00	-9.74	QP			

Test Curve:
Vertical:



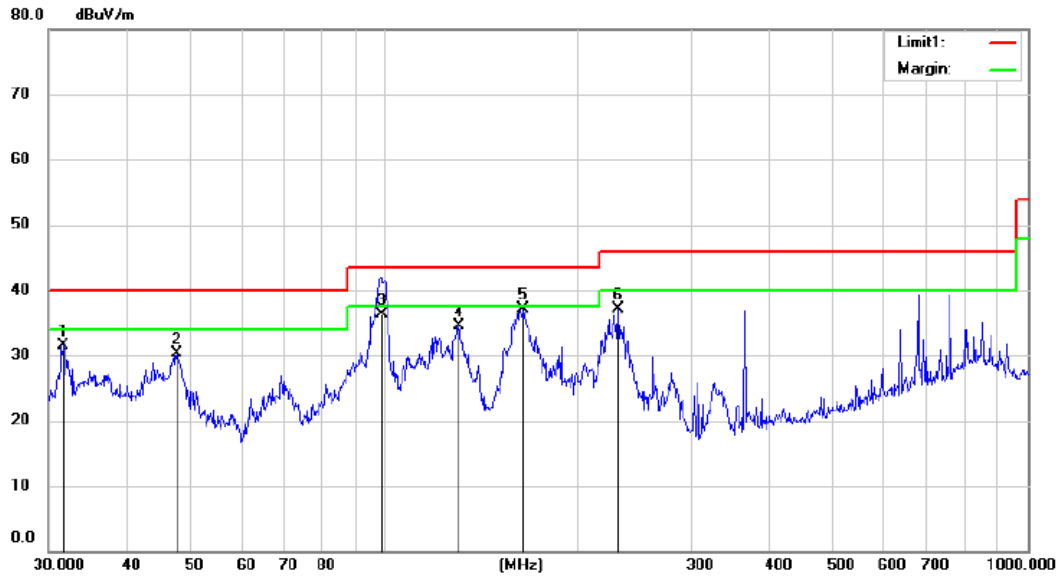
Final Result

No.	Mk.	Freq.	Reading Level	Correct Factor	Measurement	Limit	Over	Antenna Height	Table Degree	
		MHz	dBuV	dB	dBuV/m	dBuV/m	dB	cm	degree	Comment
1		30.8805	47.66	-16.46	31.20	40.00	-8.80			QP
2		43.9851	48.14	-14.54	33.60	40.00	-6.40			QP
3		121.4953	53.90	-16.80	37.10	43.50	-6.40			QP
4		126.3286	50.87	-17.37	33.50	43.50	-10.00			QP
5	*	167.9714	53.93	-16.63	37.30	43.50	-6.20			QP
6		877.5518	38.74	0.76	39.50	46.00	-6.50			QP

PV in+ Charging mode+ AC Out

Test Curve:

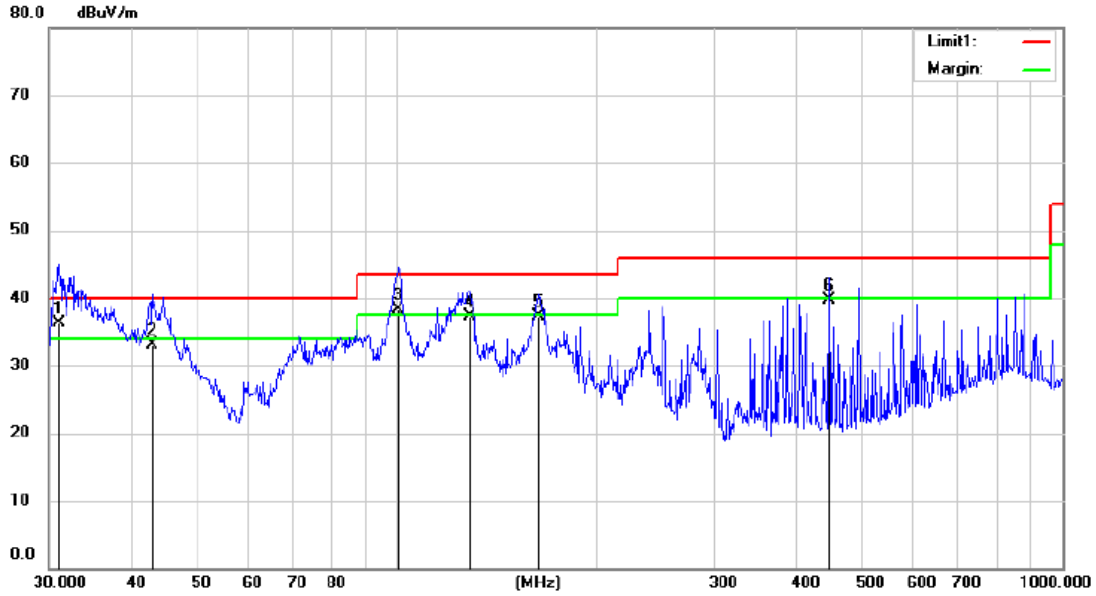
Horizontal:



Final Result

No.	Mk.	Freq.	Reading Level	Correct Factor	Measurement	Limit	Over	Antenna Height	Table Degree	
		MHz	dBuV	dB	dBuV/m	dBuV/m	dB	cm	degree	Comment
1		31.7174	47.95	-16.45	31.50	40.00	-8.50	QP		
2		47.6377	44.55	-14.27	30.28	40.00	-9.72	QP		
3		99.0060	52.71	-16.41	36.30	43.50	-7.20	QP		
4		130.4361	51.68	-17.26	34.42	43.50	-9.08	QP		
5	*	164.3301	53.99	-16.94	37.05	43.50	-6.45	QP		
6		230.9068	51.82	-14.75	37.07	46.00	-8.93	QP		

Test Curve:
Vertical:

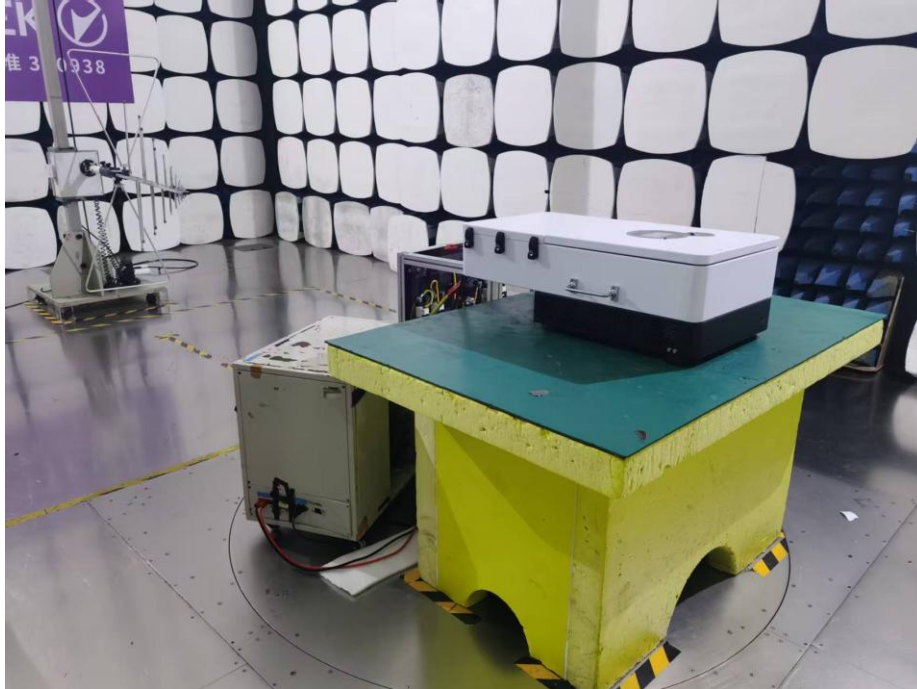


Final Result

No.	Mk.	Freq. MHz	Reading Level dBuV	Correct Factor dB	Measure- ment dBuV/m	Limit dBuV/m	Over dB	Detector	Antenna Height cm	Table Degree degree	Comment
1	*	31.1251	52.75	-16.45	36.30	40.00	-3.70	QP			
2		42.9938	47.84	-14.74	33.10	40.00	-6.90	QP			
3	!	100.6688	54.95	-16.55	38.40	43.50	-5.10	QP			
4		128.9580	54.60	-17.30	37.30	43.50	-6.20	QP			
5		163.6115	54.36	-16.96	37.40	43.50	-6.10	QP			
6		447.1974	47.22	-7.52	39.70	46.00	-6.30	QP			

Appendix I: Photograph of Test setup

Radiated Emission



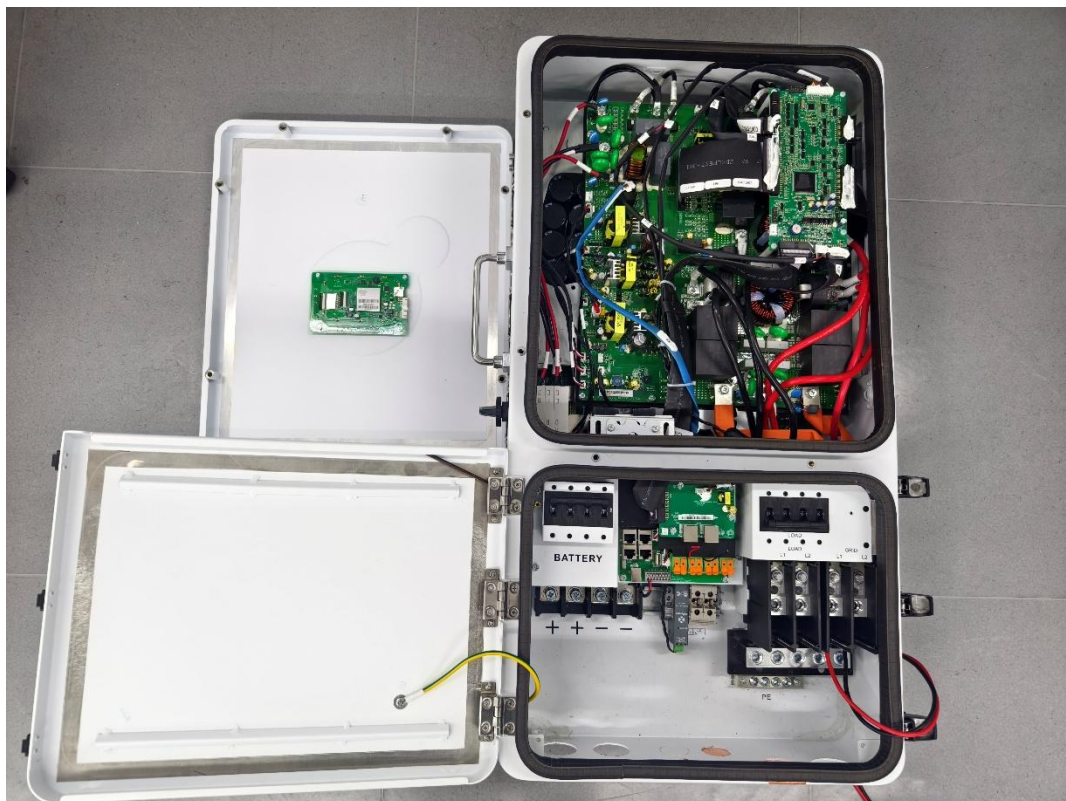
Conducted emission

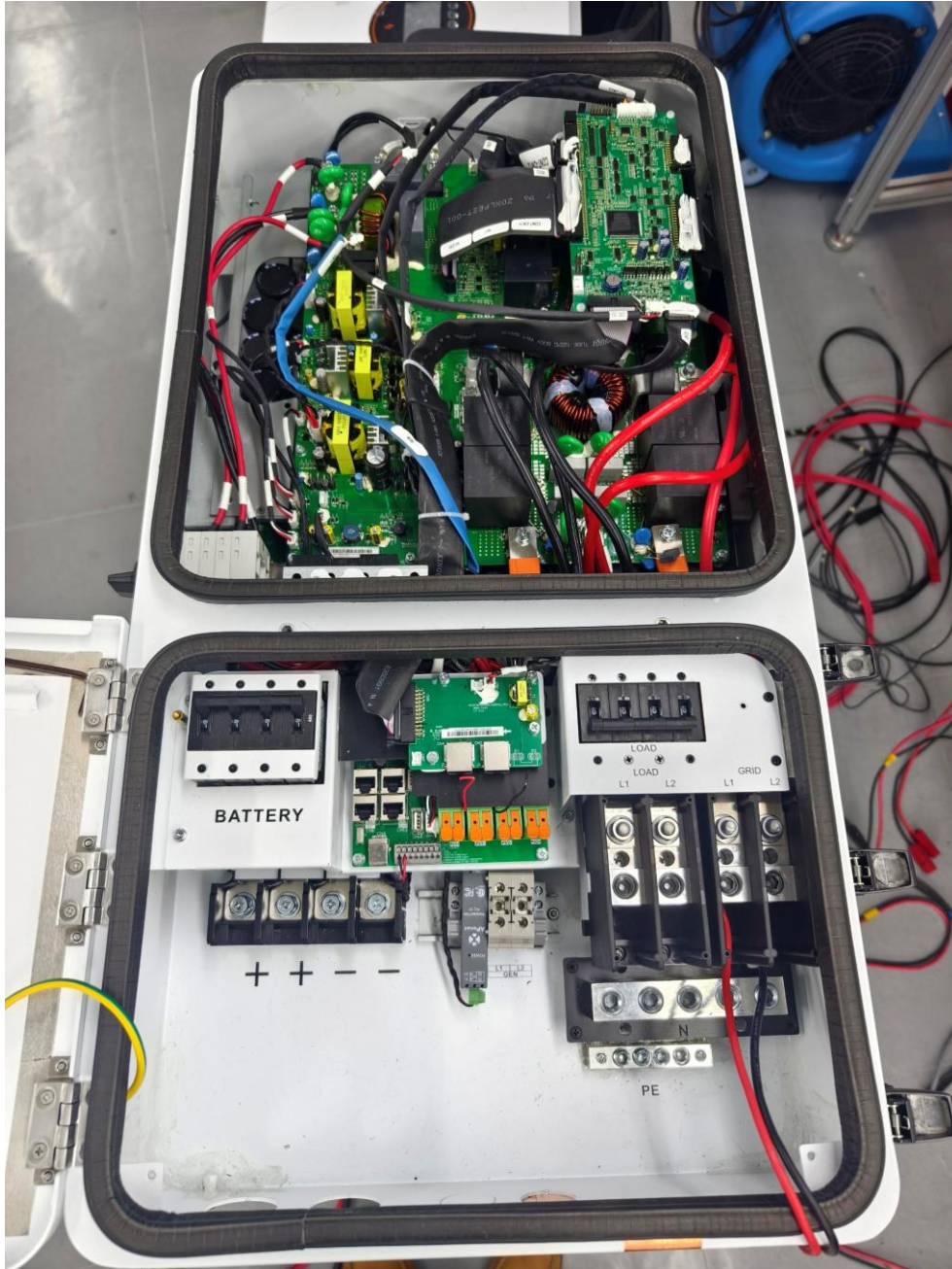


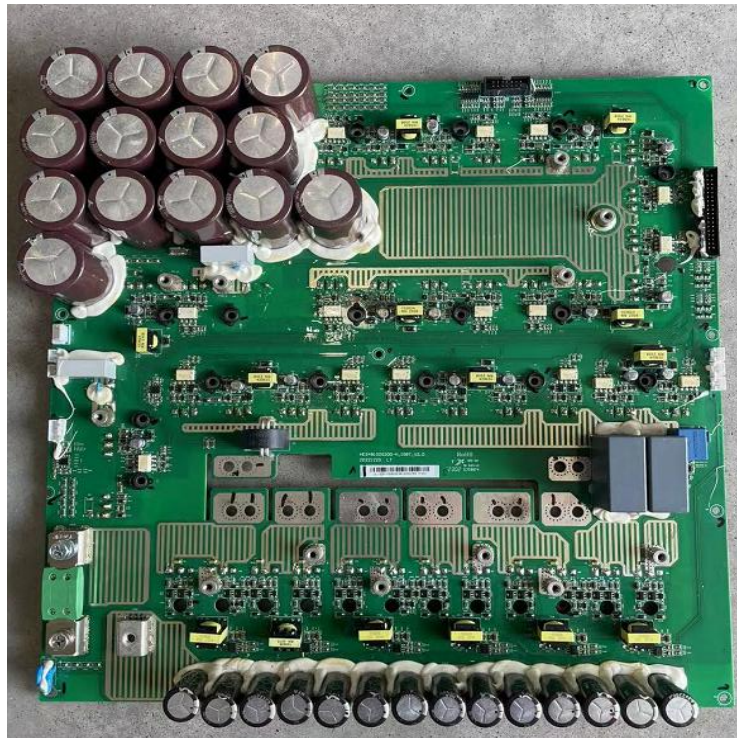
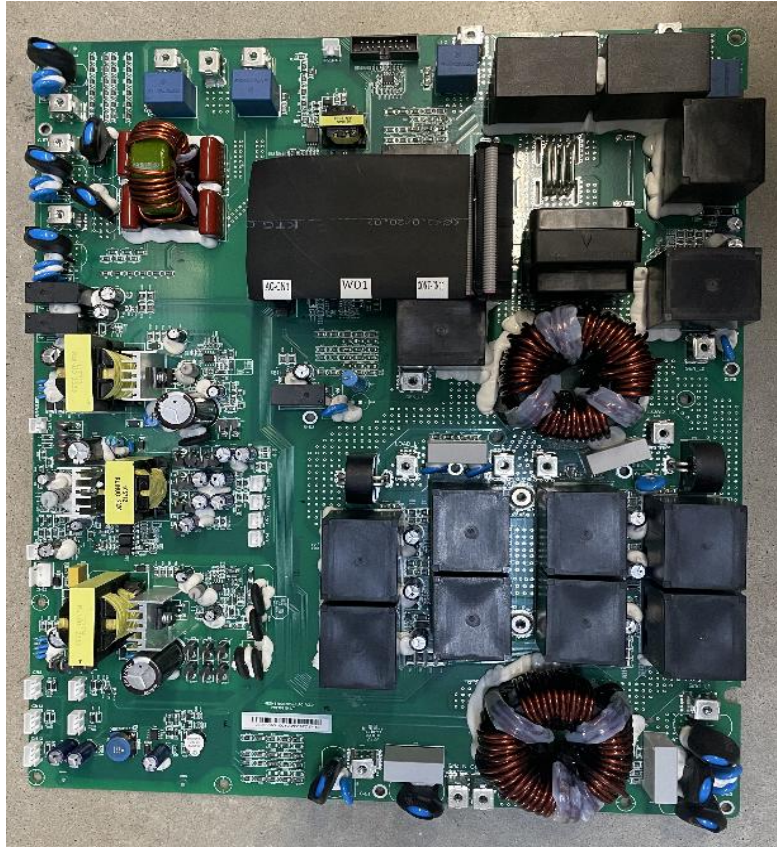
Appendix II: Photograph of equipment under test

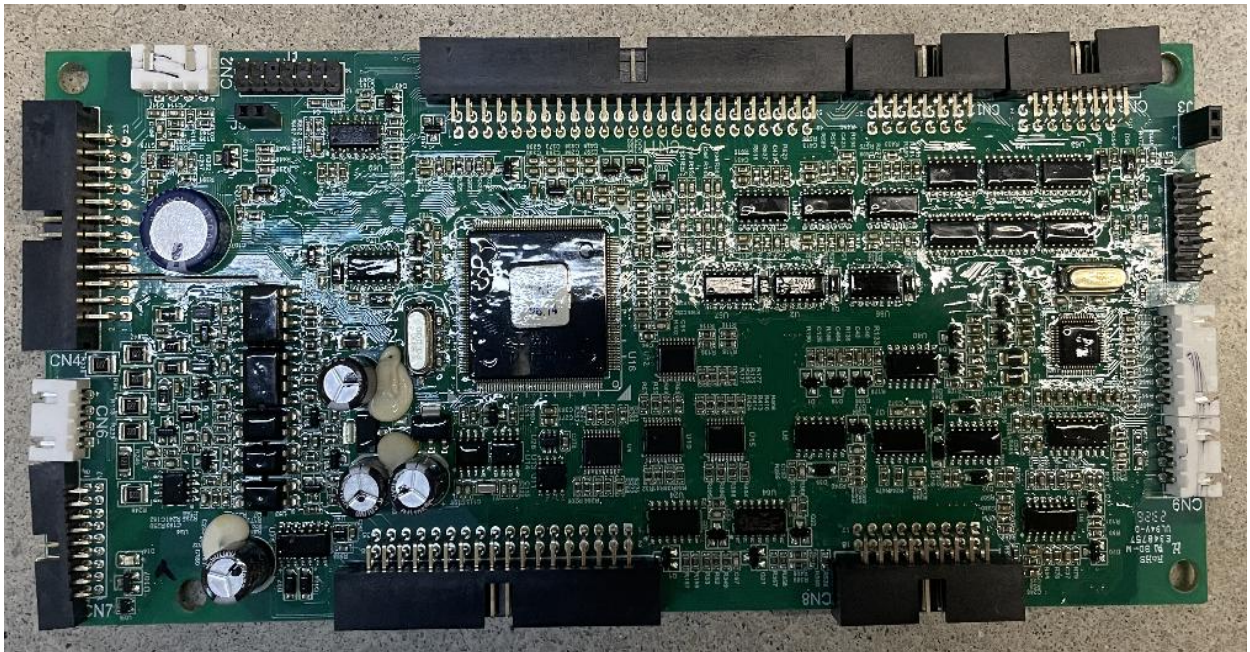
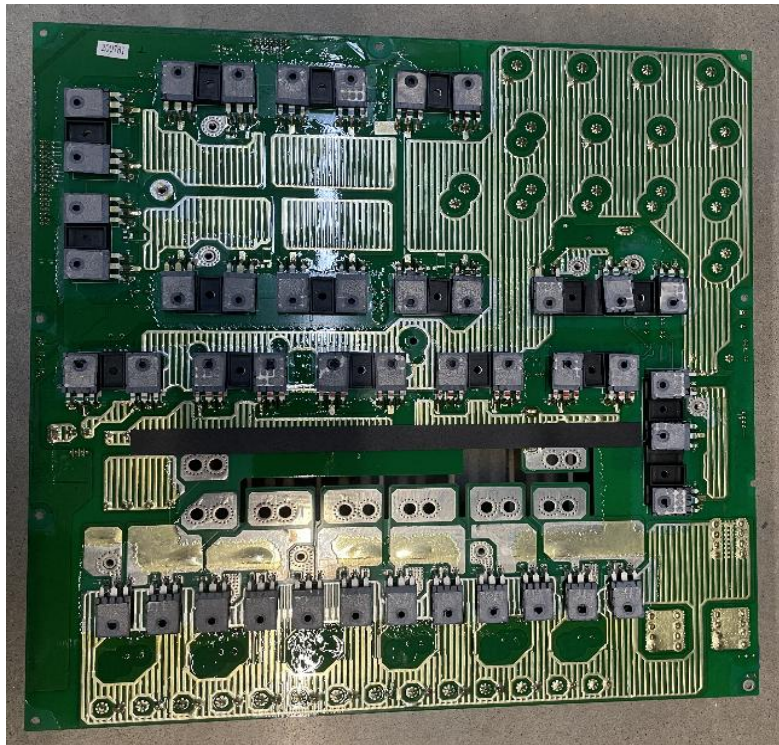
External view

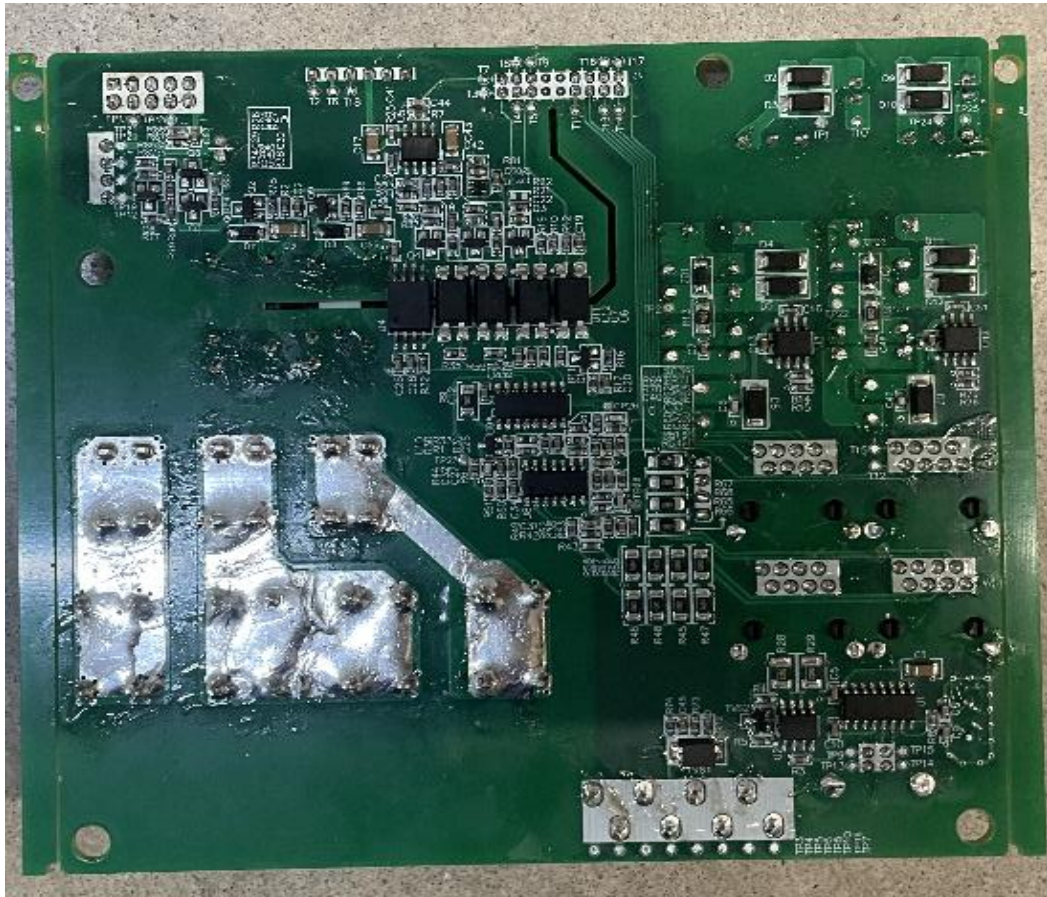


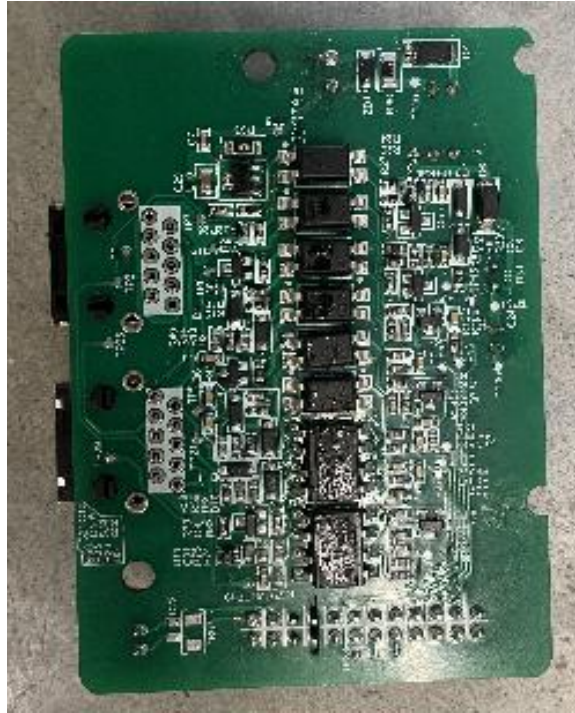












*****END of the report*****