

# OFF GRID 120Vac/240Vac SOLAR SYSTEM

SP10KW2-OFF GRID

2

US Voltage

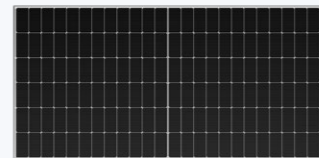


# SOLAR SYSTEM KIT

SP10KW2-OFF

2

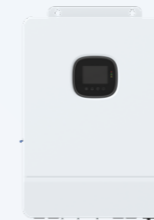
US Voltage



Solar Panel



Lithium Battery



Solar Inverter



Wifi Monitor



PV Cable



MC4 Connector



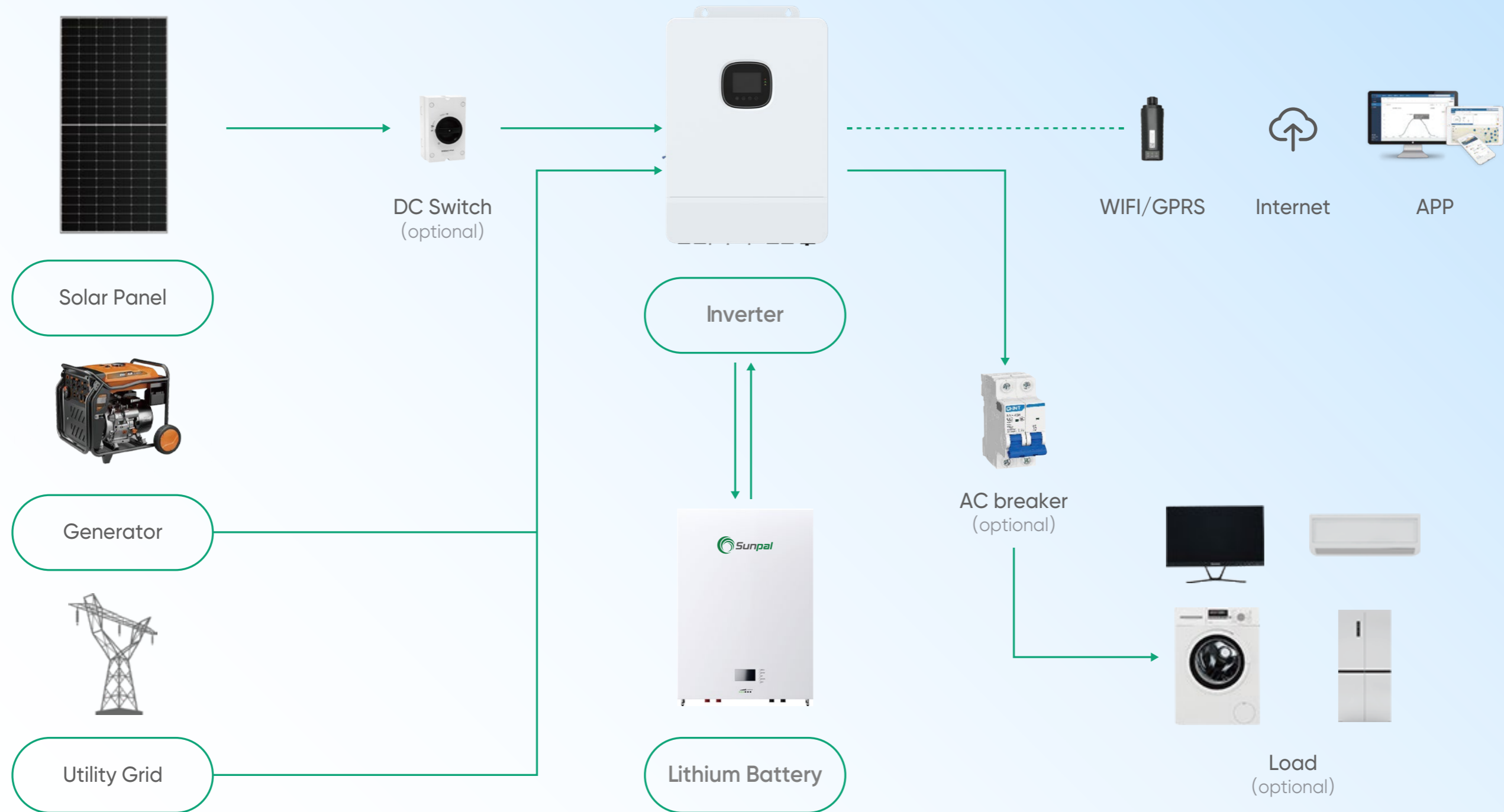
Mounting Bracket



DC Switch/AC Breaker (Optional)

# SPTOKW2 -OFF GRID

Residential Off Grid Solar System



**HiMAX 5N**

# MONO-CRYSTALLINE SILICON **585W**

N-type TOPCon BIFACIAL DOUBLE GLASS Solar Module

- Positive power tolerance (0~+5W) guaranteed
- Reduced resistive loss with lower operating current
- Higher energy yield with lower operating current
- Reduced hot spot risk with optimized electrical design and lower operating current

**STC**

Testing Condition

**52.03V**

Open Circuit Voltage(Voc/V)

**14.36A**

Short Circuit Current(Isc/A)

**42.86V**

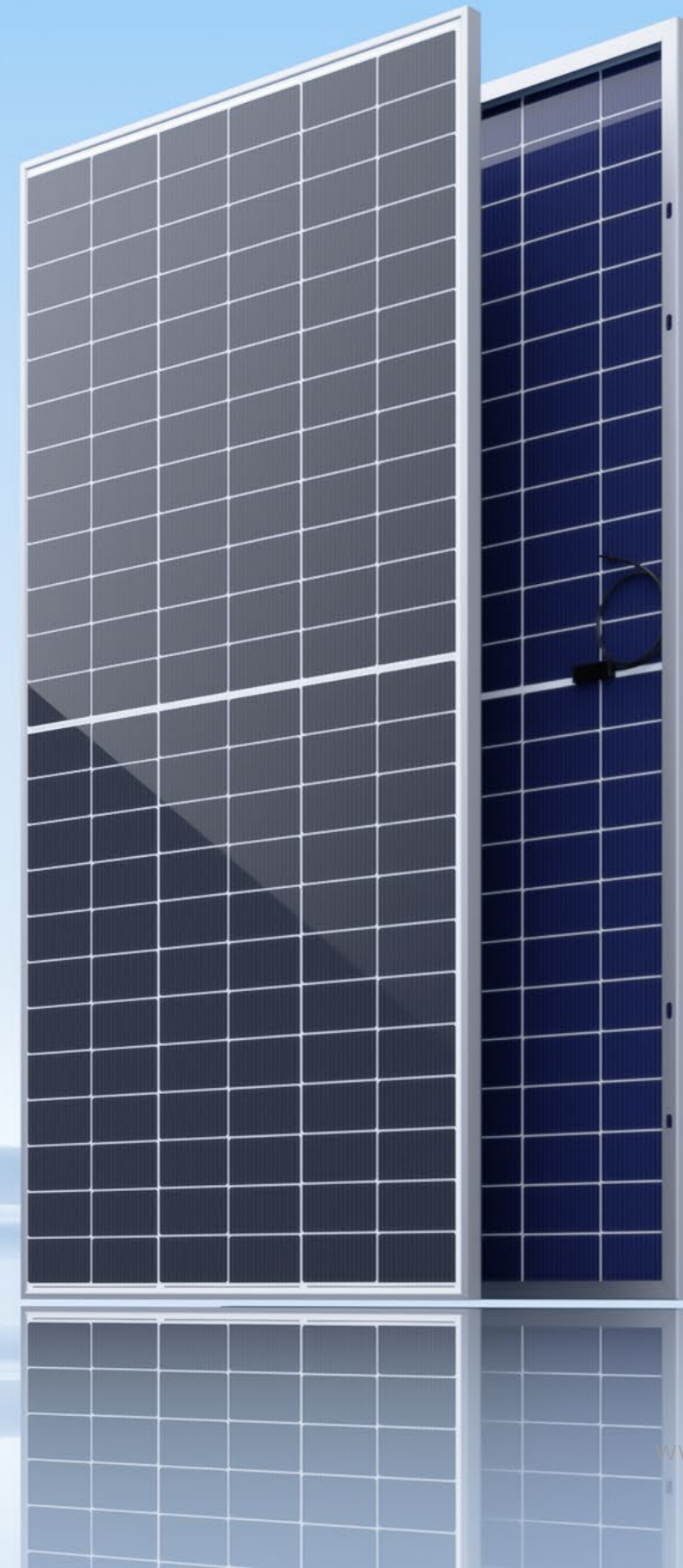
Voltage at Maximum Power(Vmp/V)

**13.65A**

Current at Maximum Power(Imp/A)

**22.64%**

Module Efficiency (%)



48V 200AH

# WALL-MOUNTED LiFePO4 BATTERY

200Ah

Nominal Capacity

48V

Nominal Voltage

100A

Max. Discharging Current

100A

Max. Charging Current

## Long Life And Safety

6000 cycles with 80% DOD, high - quality prismatic battery cell

## Backup Protection

Stores energy, detects outages and automatically becomes energy source

## Intelligent

With independent smart BMS system, manages power output effectively

## Plug In And Play

Plug in batteries then working, easy to install and set up

## Compatibility

Compatible with most of the available Hybrid inverters

## Safety Cert

UL1642, IEC62619, CE, UN38.3, MSDS



# SPI-10K-UP

## Solar Inverter

- Advanced MPPT with up to 99.9% efficiency
- Up to 6 units in parallel connection
- Easy to install and simple to use
- Supports Li-ion battery BMS communication

**10000W**

Rated Output Power

**50Hz/60Hz**

Rated Output Frequency

**2**

No. of MPPT

**120Vac/240Vac**

Rated Output Voltage

**125-425Vdc**

MPPT Voltage Range:

**48Vdc**

Rated Battery Voltage



# DC CABLE

## Single-core PV Cable

- Product name: H1Z2Z2-K
- Size: 1×4mm<sup>2</sup>
- Standard Basis EN50618:2014



# 1000VDC

30A

## MC4 Connector

- Style: Photovoltaic Connector
- Size: PV005
- Standard Basis IEC 62852: 2014

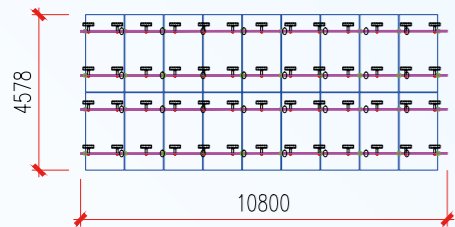


# PV MODULES INSTALL

10KW2

2

US Voltage



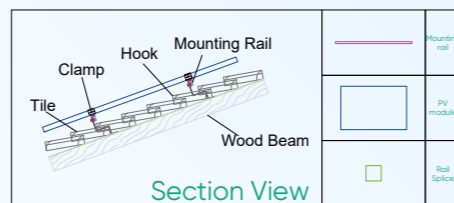
Description:

Installation area: **Glazed tile roof**  
 Mounting form: **Glazed tile roof installation**  
 Installation Quantity: **18 pieces**

Dual rows of 18 modules in one array.

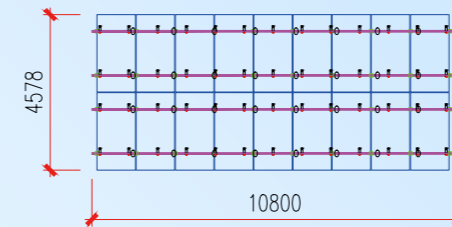
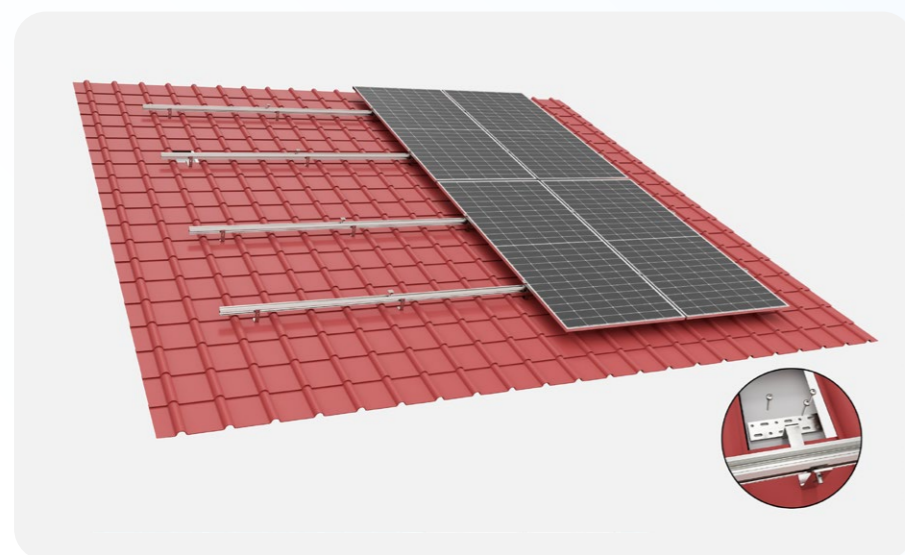
The module grounding wire is connected to the bracket, and all inverters must be grounded.

If this drawing is not consistent with the site, it will be adjusted according to the actual situation on site.



LAYOUT PLAN

SCALE 1:100



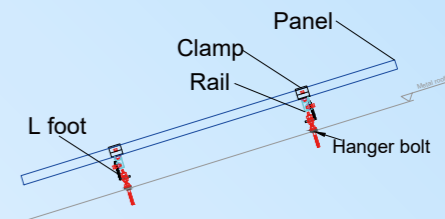
Description:

Installation area: **Metal roof**  
 Mounting form: **Metal roof flat installation**  
 Installation Quantity: **18 pieces**

Dual rows of 18 modules in one array.

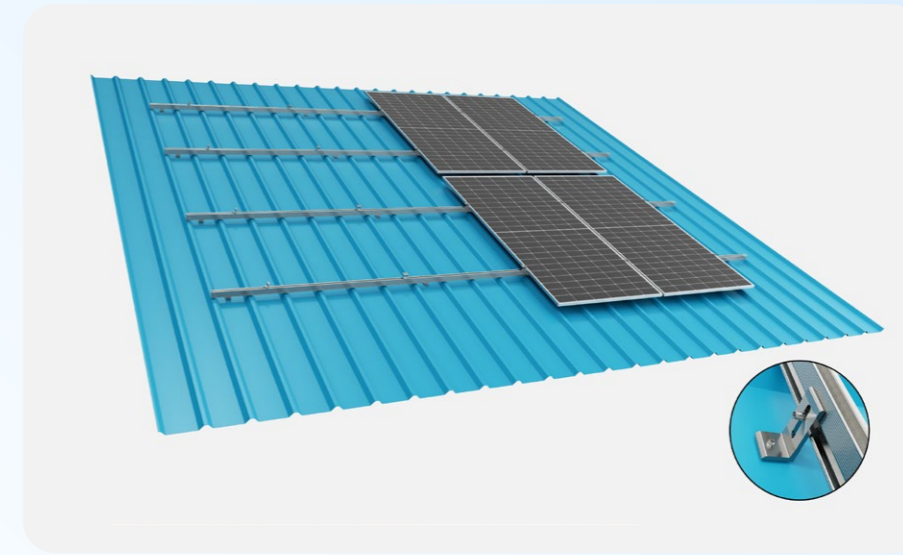
The module grounding wire is connected to the bracket, and all inverters must be grounded.

If this drawing is not consistent with the site, it will be adjusted according to the actual situation on site.



LAYOUT PLAN

SCALE 1:100



# 10KW2 OFF-GRID SOLAR SYSTEM

